



Cedara

I-Reach™



Universal Image Access

Softcopy reporting should mean that images are available where, when and how you need them. Beyond the needs of radiological reporting, a Picture Archiving and Communications System (PACS) should provide image access to referring physicians, clinicians and other healthcare specialists.

Dedicated workstations, while robust in functionality, present some limitations in terms of image access.

Beyond image needs within your institution, PACS solutions also need to accommodate the needs of teleradiology; they should provide a solution for on-call Radiologists, who would like to review images from offsite locations; they should allow physicians at multi-site facilities to view patient images during rounds.

For environments where immediate image access can make the difference between life and death, your PACS solution needs to *extend the reach* of Medical Imaging throughout your institution and beyond.

A Solution for Your Complete Enterprise

Cedara I-Reach™ is a web-based DICOM server that provides access to relevant information at the appropriate time, presented in the proper context, with the clinically relevant tools to ensure patient outcomes are accurate and timely.

This internet-deployable technology provides the ultimate information access utilizing web-enabled technologies in a thin-client environment.

The **Cedara I-Reach** software provides:

- web-based report and image viewing
- easy-to-use administration tools
- security and privacy features to facilitate hospital HIPAA compliance
- automated workflow tools for increased productivity
- scalable design for small-, medium- or enterprise-sized hospitals
- integration with OEM archives and HIS/RIS for ease of implementation

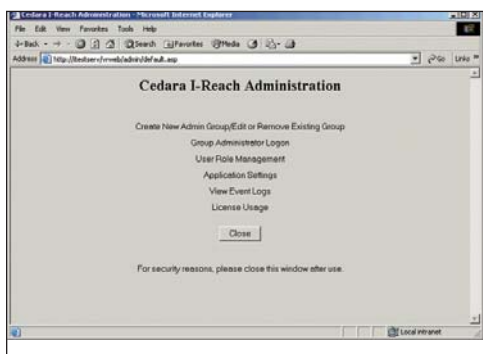


Through Internet connectivity, Cedara I-Reach extends the reach of Medical Imaging throughout your institution and beyond.



Cedara

I-Reach™



Administrative tasks such as system maintenance, user profile creation and tracking can be easily performed using Cedara I-Reach's intuitive user interface

Optimized Workflow

Image Manipulation and Viewing Tools

- Basic image manipulation and measurement tools
- Current and prior comparisons
- Configurable toolbars and right-click pop-up menus improve workflow
- New clinically reliable interface is the same as **Cedara I-SoftView™**

Simple Administration

Cedara I-Reach is easier than ever to administer using tools such as:

- Centralized user profile management for configuring user preferences
- Centralized version management for quick and easy software upgrades
- Role-based access defines user privileges
- Roaming profile gives users access to their preferences from any computer

Image Compression

- Facilitates quick display and loading of large datasets across low bandwidths using DICOM JPEG 2000 progressive compression techniques

Efficient Workgroup Reading

- Ability to share worklists and mark studies as read allows users to collaborate more effectively

Facilitates HIPAA Compliance

- Security login restricts access to authenticated users
- User access tracking and activity login
- No local image cache so images cannot be accessed after logging off
- Auto time-out ensures there is no unauthorized access
- 128-bit encryption support for Internet access

Advanced Functionality

Advanced tools are available as options to add functionality to the application and are easily deployed over the web.

3D Tools

- Multiplanar Reformatting (MPR) including Thick Slab support
- Maximum Intensity Projection (MIP)
- 3D Volume Rendering of Point and Click Classification
- Batch Reformatting and Curve Reformatting



Cedara

I-Reach™



Orthopaedic Tools and Templates

Orthopaedic tools and templates are available to assist Orthopaedic Surgeons with planning using digital images. Image relation and Cobb angle measurements are just some of the specialized tools provided. Digital prosthetic templates can be overlaid on images to ensure sizing of prosthetic devices is accurate.

Scalable Solution

Web-Enabled Deployment

The remote user can perform image viewing and manipulation via the Internet. The client software is automatically downloaded the first time the user accesses the **Cedara I-Reach** server from their computer. Advanced tools are also downloaded depending on user privileges.

Upgradability

Because **Cedara I-Reach** is web-enabled, deploying software upgrades is easy. Upon upgrading the server software, the client software is deployed automatically over the web.

Progressive Downloading

The **Cedara I-Reach** software uses progressive downloading to give users instant access to images with immediate interactivity while the entire study loads to the client.

Scalable to Include Multiple Healthcare Facilities

Cedara I-Reach readily scales healthcare enterprises incorporating multiple facilities for easy access to studies from many different locations.

HIS/RIS Integration

Cedara I-Reach seamlessly integrates with any information and repository system through its available interfaces.